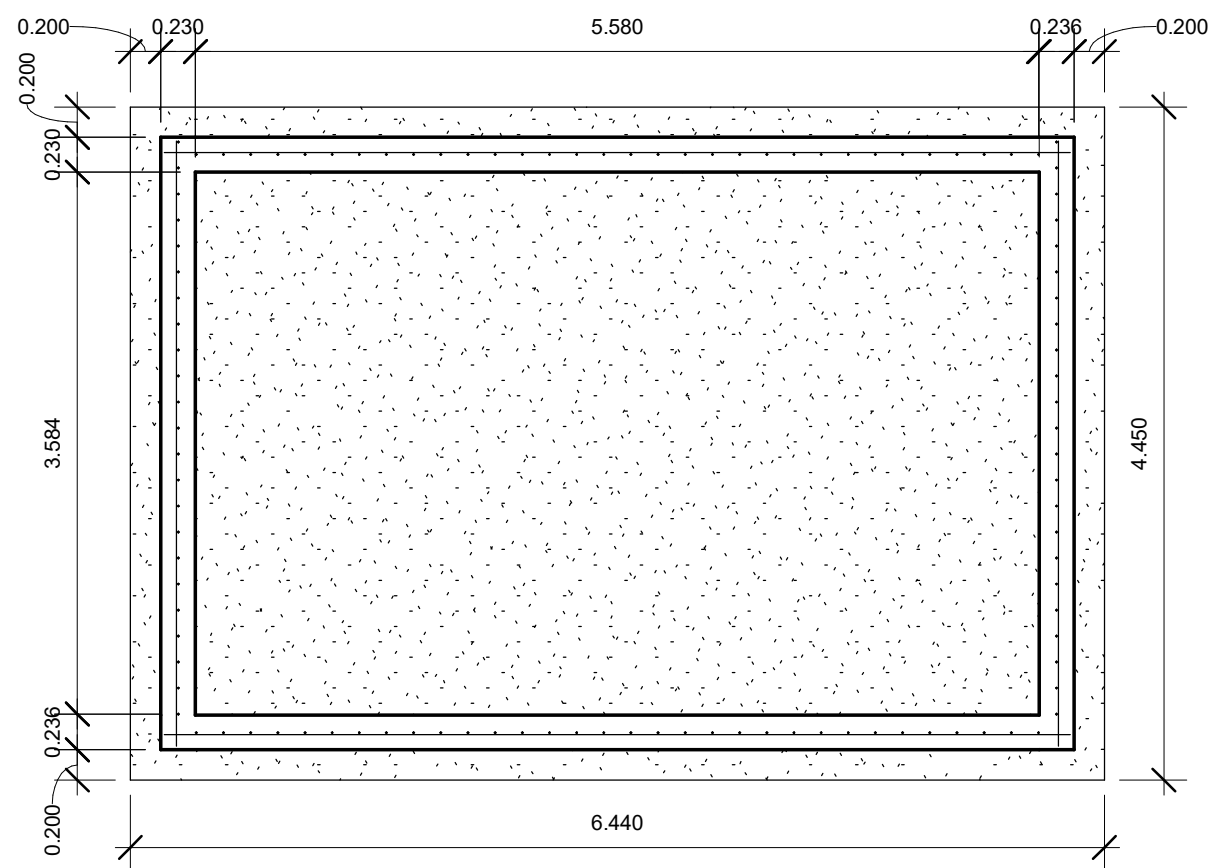
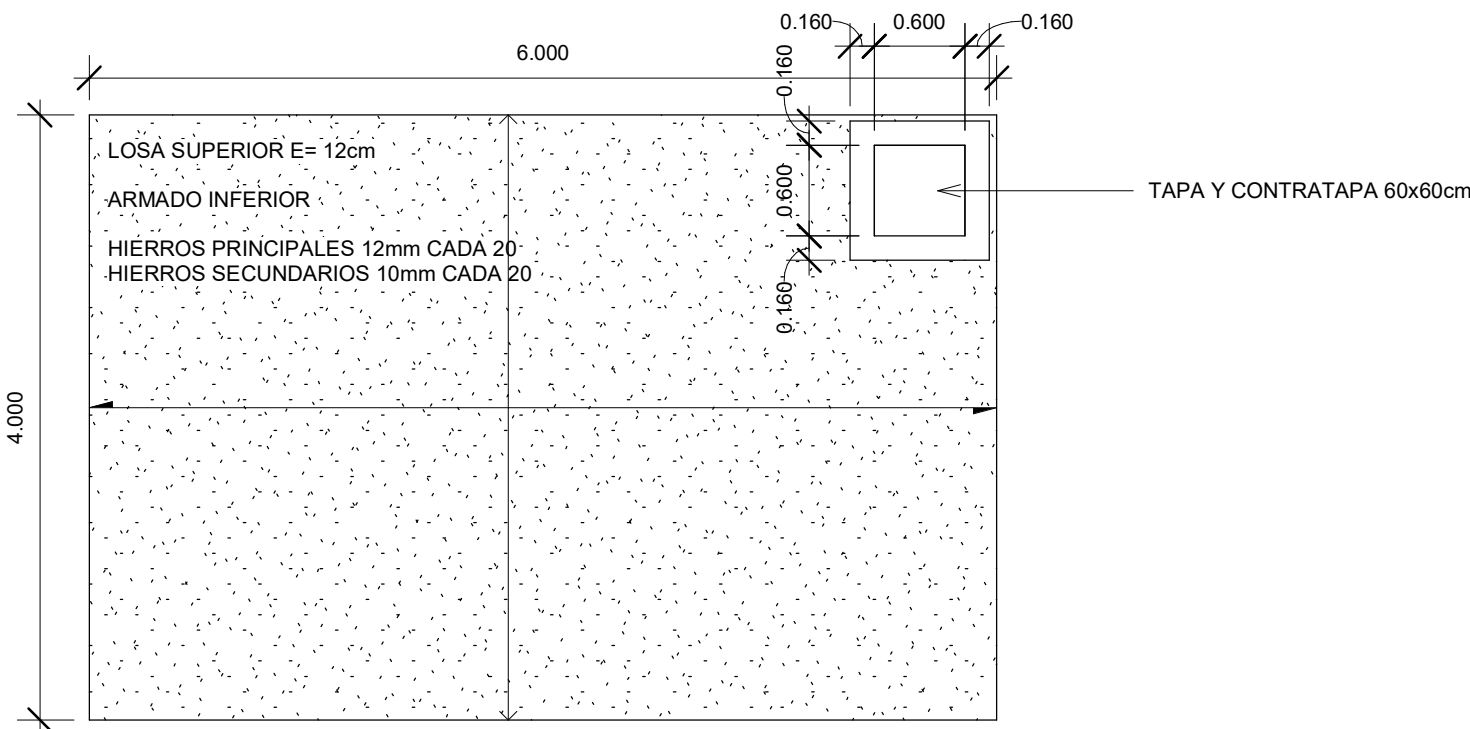


PLANOS DE LOSA SUPERIOR E INFERIOR

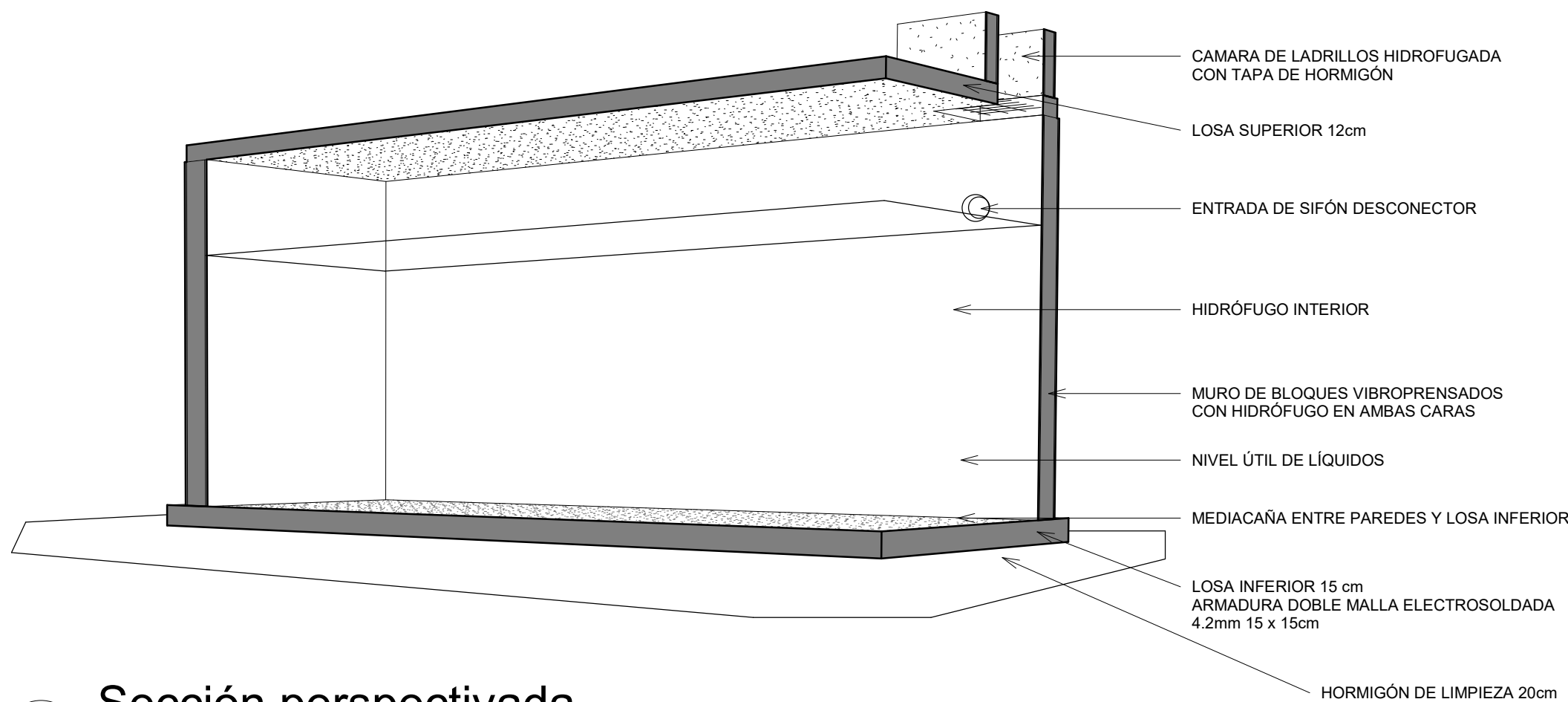
escala 1: 50



1 Sección horizontal
1 : 50



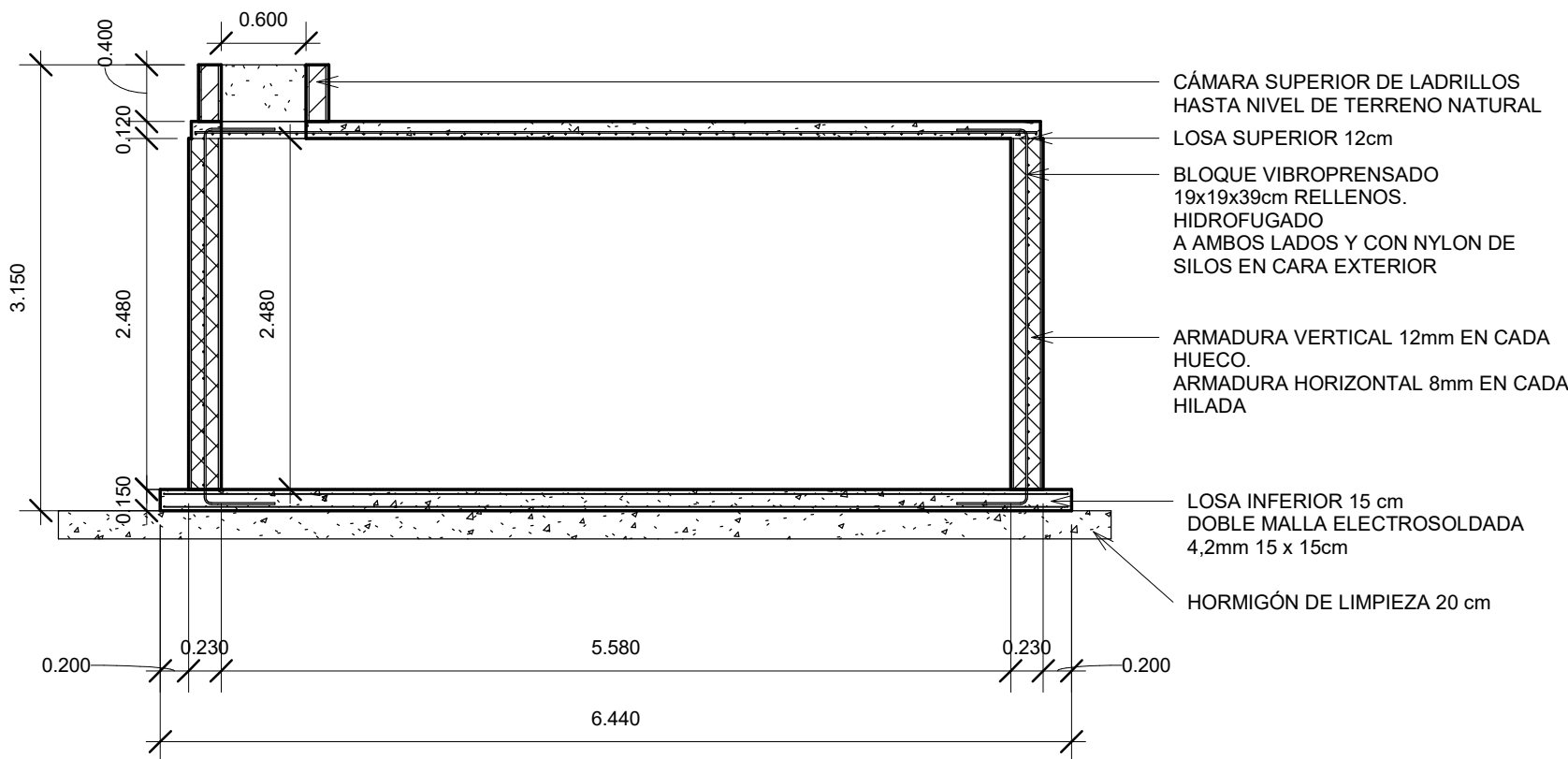
2 Losa superior
1 : 50



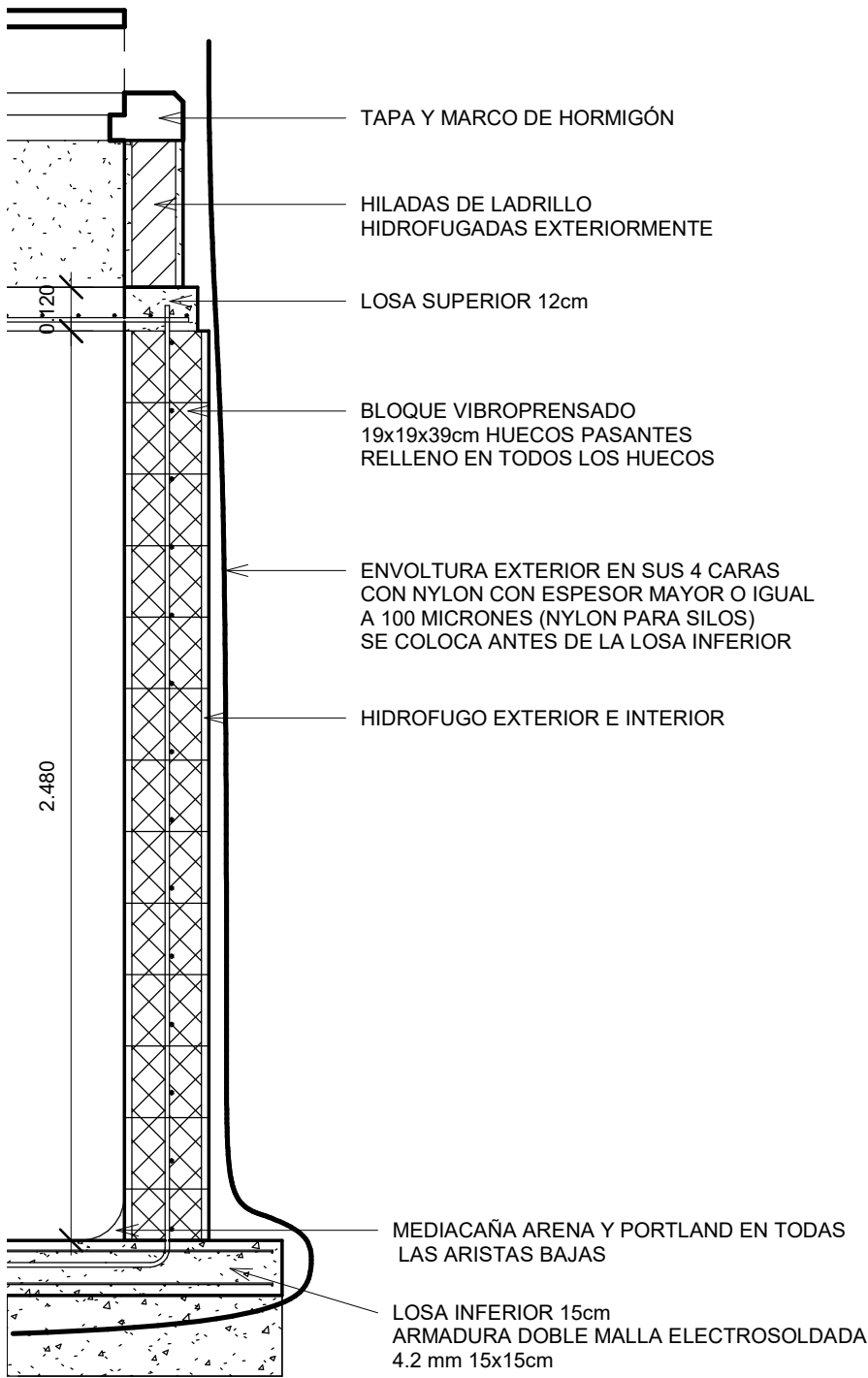
3 Sección perspectivada

PLANOS DE SECCIONES Y DETALLES

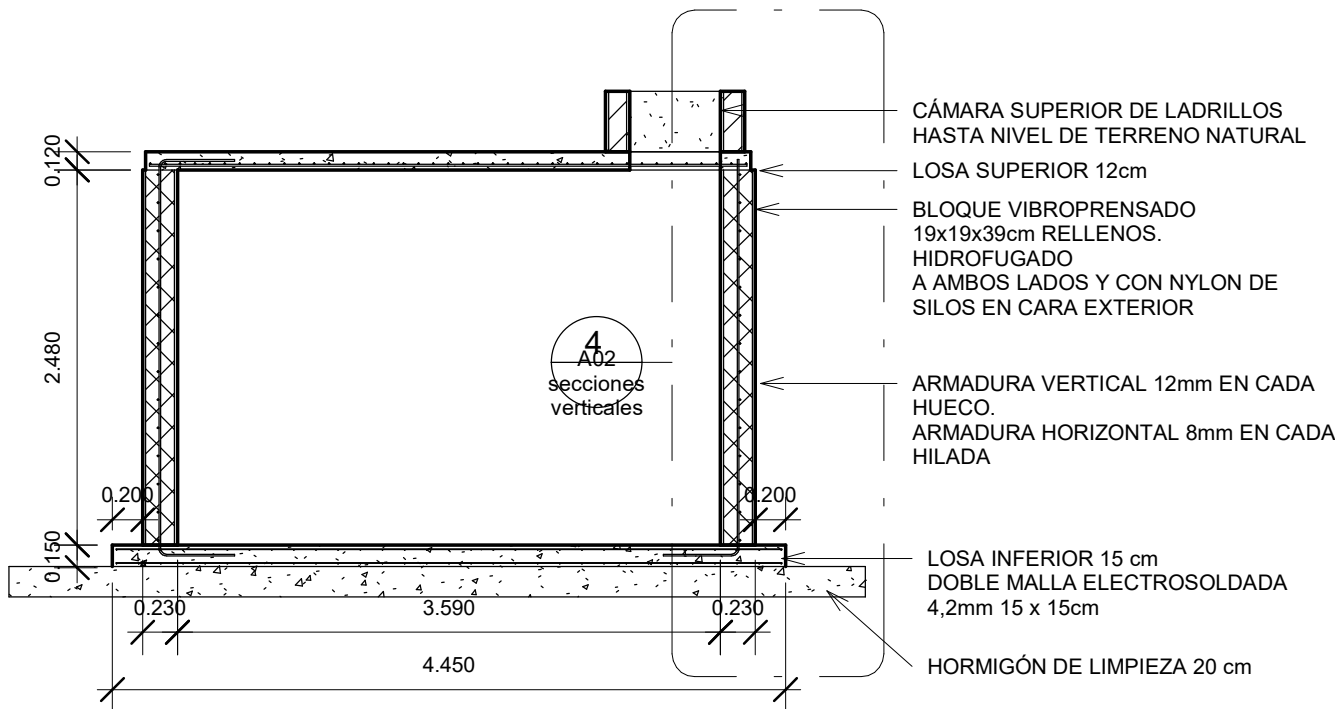
escala 1: 50 y 1: 20



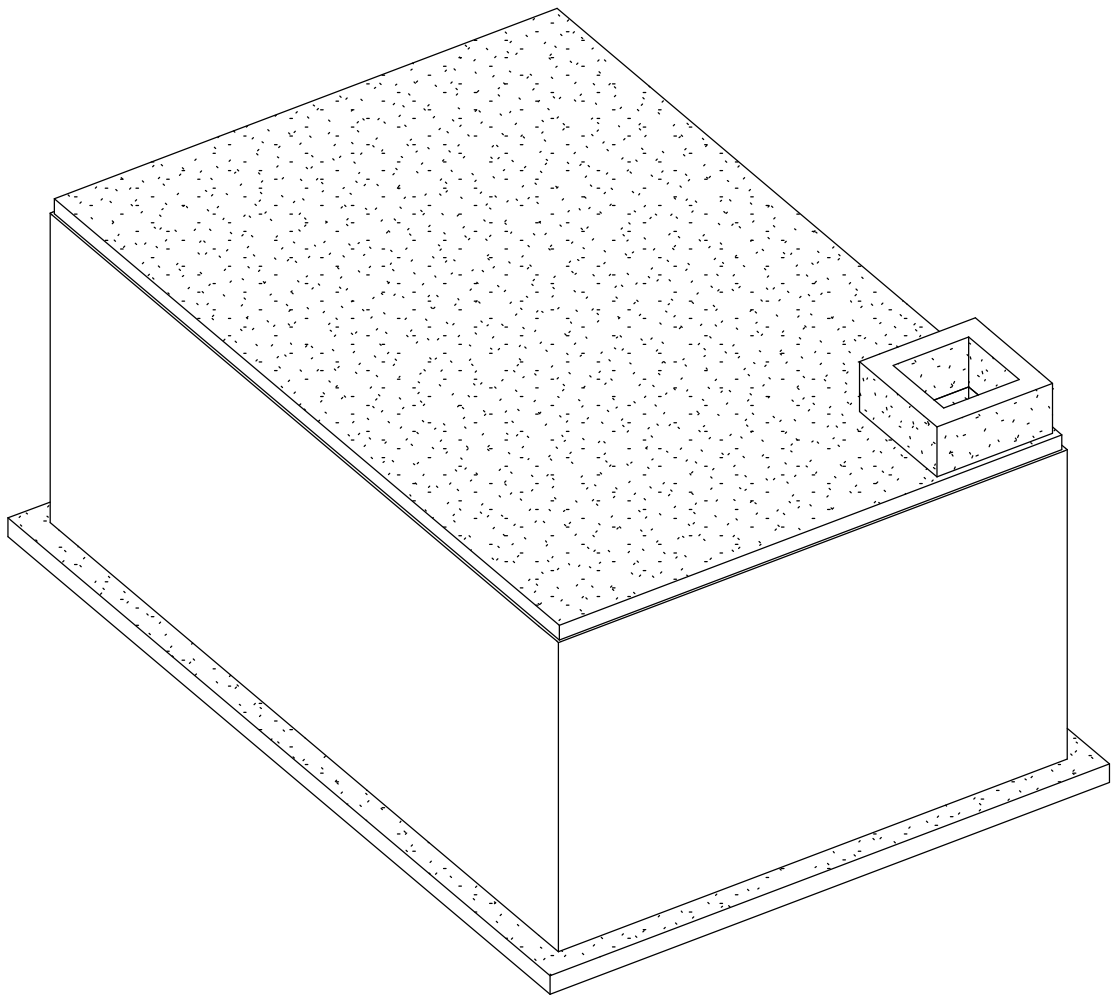
1 sección longitudinal
1 : 50



4 corte integral
1 : 20



2 sección transversal
1 : 50



3 Perspectiva axonométrica